

## HOLEX® Drilling machine manual vice

- **Sturdy and handy design.**
- **Jaws through hardened and ground.**
- **Consistent overall length** (the spindle retracts into the handle)
- Universal fastening capability due to long holes.
- Movable jaw with guides at the sides.
- Fixed jaw with three vertical prismatic and one horizontal prismatic section.

**Accuracy:** Within **0.20 mm**.

**Material:** **Cast iron body.**

**Application:** For clamping components on drilling machines.



Jaw width A	mm	80	100	120
<b>32D 36 5045</b> Drilling machine manual vice				
Clamping range b	mm	65	87	110
Jaw height C	mm	30	30	30
Base body length a	mm	233	288	343
Overall height c	mm	64	64	66
Weight	kg	4	4,8	6,5

## Sets of parallels

**Precision ground as pairs.**

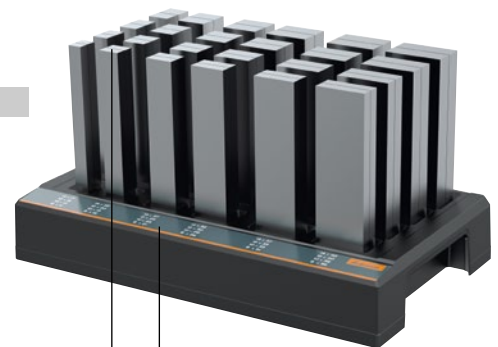
**Application:** In high precision work for parallel mounting of components in machine vices or jigs.

### Parallel blocks in various thicknesses – upright

36 6702 – GARANT – **precision version**. Pairing tolerance  $\leq 0.004$  mm, width / height tolerance  $\leq 0.007$  mm, extremely precise flatness and rectangularity. Documents stored in special plastic stand. Hardness: 60 HRC.

36 6704 – HOLEX – standard version. Height and pairing tolerance 0.01 mm. Presented in a wooden box. Hardness: 60 HRC.

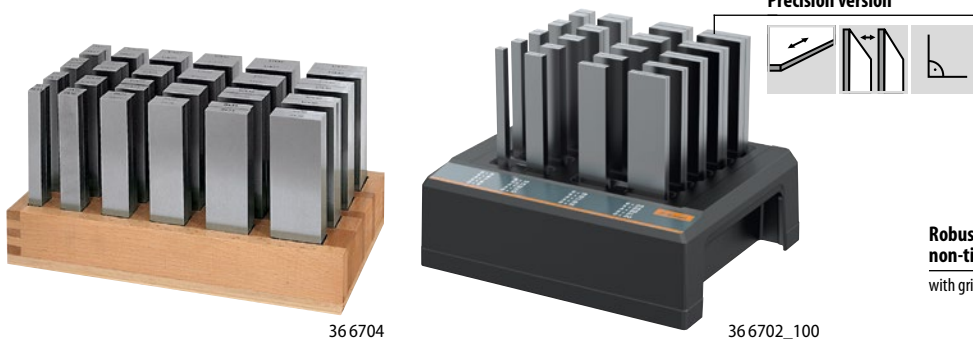
**Note:** Sizes 125 – 200: In 1 mm increments, except 9 mm, all other dimensions achievable.



36 6702\_125/150/200

**with large display**

for quick location of documents.

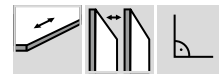


36 6704



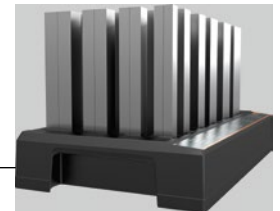
36 6702\_100

**Precision version**



**Robust non-tipping box**

with grip recesses.



36 6702

Length	mm	100	125	150	200
<b>31Z 36 6702</b> Set of parallels					
<b>32D 36 6704</b> Set of parallels					
Number of strips	pair	20	24	24	24
Length	mm	100	125	150	200
<b>Content:</b>		2×5; 2×10; 2×15; 2×20; 3×6; 3×11; 3×16; 3×21; 4×7; 4×12; 4×17; 4×22; 5×8; 5×13; 5×18; 5×23; 6×9; 6×14; 6×19; 6×24	8×11; 8×16; 8×21; 8×26; 8×31; 8×36; 10×13; 10×18; 10×23; 10×28; 10×33; 10×38; 12×15; 12×20; 12×25; 12×30; 12×35; 12×40; 14×17; 14×22; 14×27; 14×32; 14×37; 14×42	8×11; 8×16; 8×21; 8×26; 8×31; 8×36; 10×13; 10×18; 10×23; 10×28; 10×33; 10×38; 12×15; 12×20; 12×25; 12×30; 12×35; 12×40; 14×17; 14×22; 14×27; 14×32; 14×37; 14×42	8×11; 8×16; 8×21; 8×26; 8×31; 8×36; 10×13; 10×18; 10×23; 10×28; 10×33; 10×38; 12×15; 12×20; 12×25; 12×30; 12×35; 12×40; 14×17; 14×22; 14×27; 14×32; 14×37; 14×42

### Sets of parallels – 5 pairs

**magnetic**

**Accuracy:** Height tolerance  $\pm 0.01$  mm; width tolerance  $\pm 0.02$  mm.

**Hardness:** 60 HRC.

**Reduces the clamping time by up to 10 %.**

Length	mm	90	125	160	200
<b>31Z 36 6740</b> Set of parallels magnetic					
Number of strips	pair	5			
Width	mm	2.5			
Height	mm	15; 22; 25; 30; 32	15; 30; 35; 37; 39	22; 30; 37; 42; 47	25; 40; 47; 52; 57
Length	mm	90	125	160	200



36 6740



36